

Extraordinary

Museum

Artifacts

*and*

Artwork

*800 Years*

*of very rare and unusual*

*European Artwork...*



# *Aged Wood Tablets*

**ALL ARTWORK CAN BE USED FOR TABLETS**

for updated artwork - please visit 'The Museum' - [www.GreatForgeries.com](http://www.GreatForgeries.com)

# DECLARATION

The look of our wooden tablet is the result of studying the techniques behind that which carried the artwork of the past - gesso'd wooden tablets & panels. We are very proud to present the extremely realistic results of this study, a profiled and wax polished aged tablet. Please note that **each tablet and it's effects (21 in all) are individually hand created** (the distressing on each print and tablet is done by hand) and as such are to be *treated carefully* as any precious item would be - no two are alike!

We have not set out to make you believe that the artwork was painted on our tablets, our intention is to create an artifact which looks as if it carries an aged print of the period .

..

*The Curator - 'An Englishman in LA'*

Provenance label as attached to all tablets  
this refers to Religious Art page 13

*An Englishman in LA*<sup>TM</sup>  
*hand-made antiques*

## Biblical Passage 1

*artist unknown - Victorian - Our Private Collection*

Over the years I have collected many varied pieces of artwork sadly some of them have no provenance, so they stand alone on their beauty or message. That is very much the case with this passage from Corinthians, it is of Victorian origin and was purchased with several other such passages by us in London some years back - all other information is locked somewhere in the passage of time . . . .

*antiques can be viewed at 'The Museum'*

[www.greatforgeries.com](http://www.greatforgeries.com)

*please refer back to store for purchases*

est: 1992

*"the most unusual company this side of the 15th century"*

# THE WALL HANGING

16 x 18 cracked image tablet

complete artwork range available



# WOODEN TABLETS



*All of our products are made by hand and as so follow the natural law of unpredictability (no two pieces are identical).*

*The wooden tablet is made to mimic art pieces that are hundreds of years old and is made in much the same manner as they did centuries ago. The artwork on the front of the tablet is a hand-aged parchment print, whilst the prints, which are all accurate to the originals are all the same, the aging on each one is different. Unlike some companies 'old' prints which have the aging as part of the print, ours is real and if you run your fingers over the surface you can feel the distressing.*

*The back of each tablet contains a full description plate, felt bumpers, hanging thong and is signed. They are available in 3 sizes, all  $\frac{3}{4}$ " thick: 8" x 11" 11" x 16" - Virtually any of our images will fit these pieces. 8" x 18" is available for narrow art.*

*Please feel free to inquire about custom sizes. We are also able to make up tablets from your artwork.*



This close up shot shows in more detail the 'aged' look of the tablet.



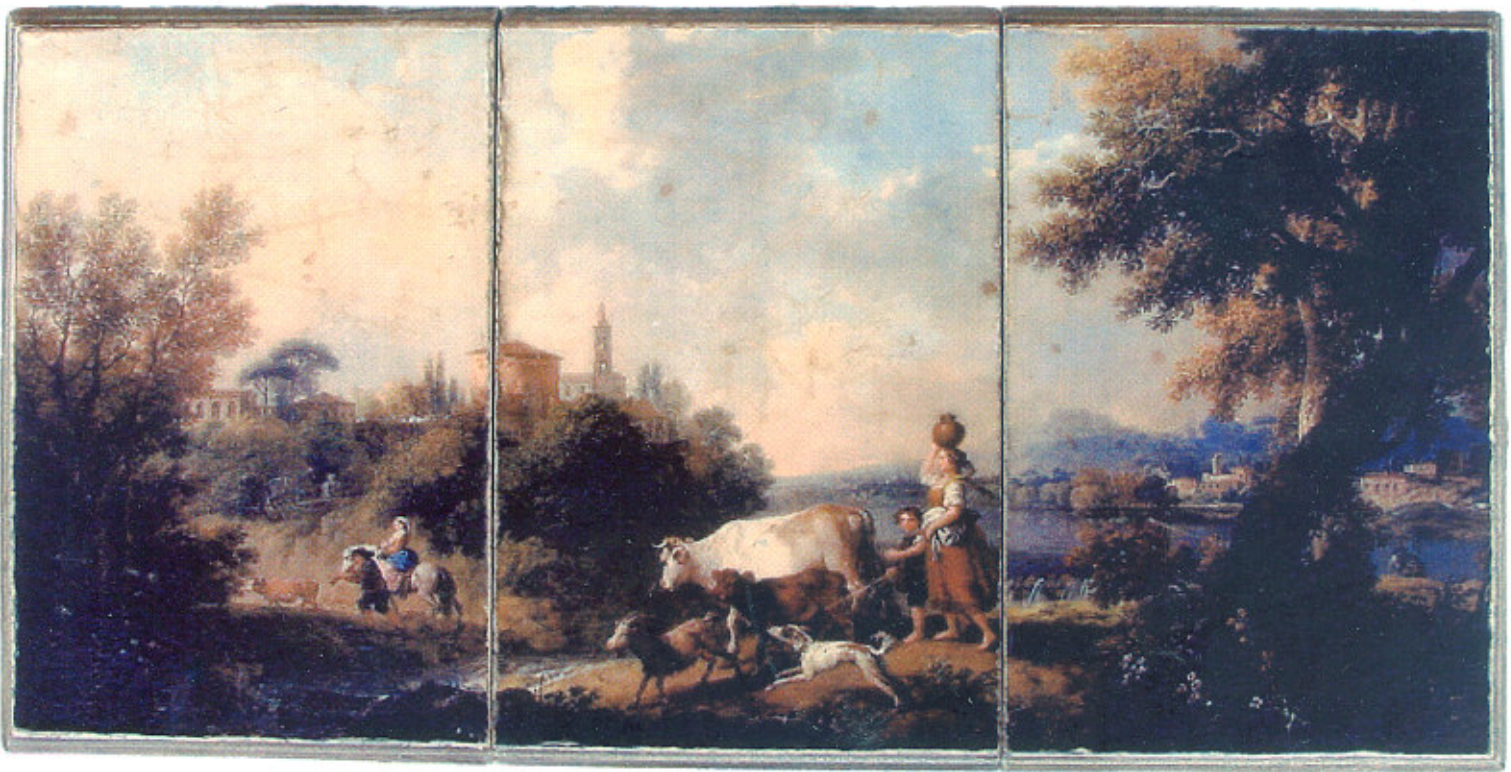
An Englishman in LA is proud to present:

# The Regal

A 15 X 20 CARVED MASTERPIECE  
ALL ARTWORK IS AVAILABLE

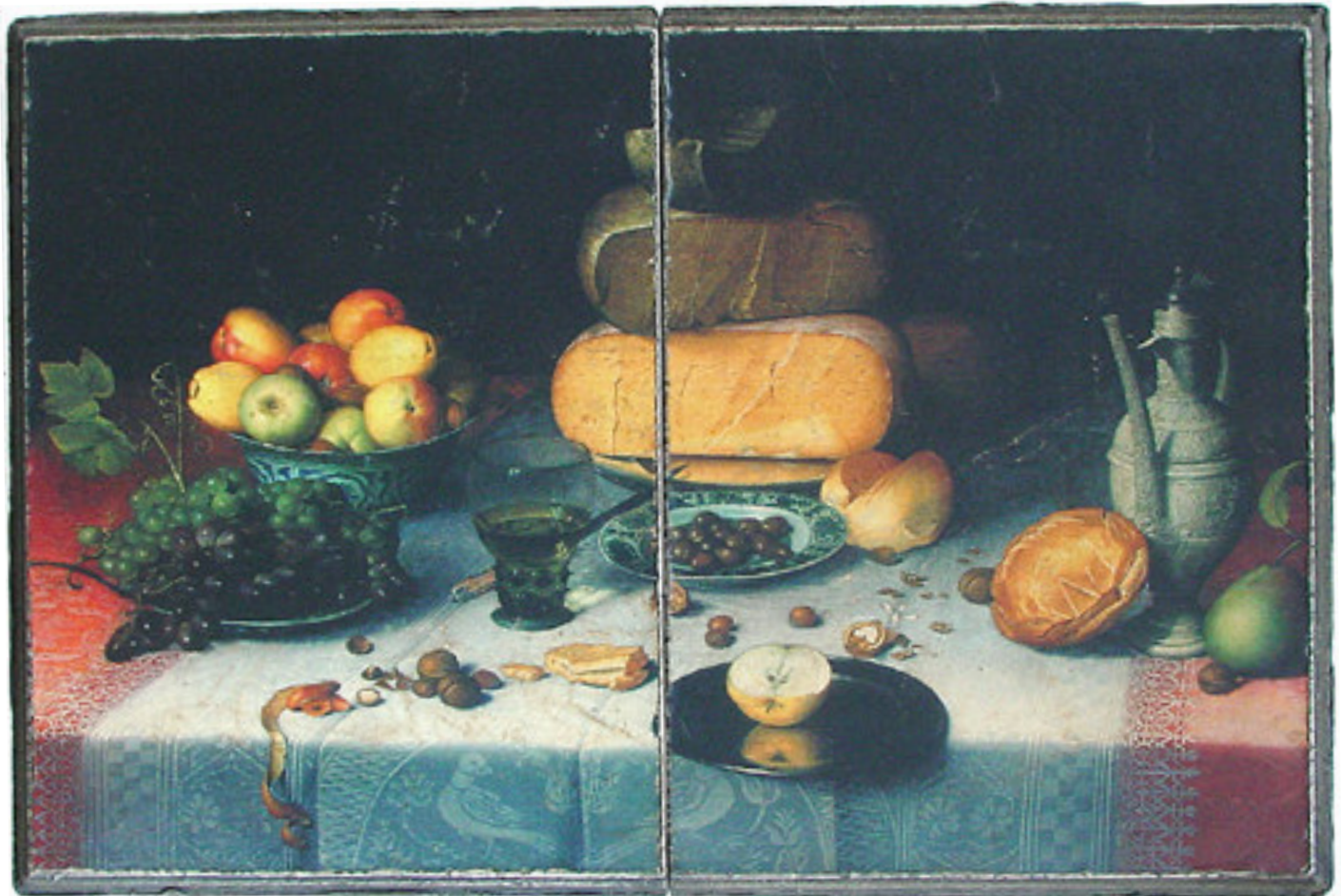
HAND-MADE in USA





The Triple Tablet - Triptych

3 precisely made 12 x 16 tablets that meet together to form the image - this artwork only



The Double Tablet

Dutch Cheese Table 057-17

2 separate precision made 12 x 16 tablets - most artwork available



*The Guardian Angel - aged wood 33" x 16" - signed artwork*



*other great images available, please enquire*