

An Englishman in LA

est: 1992

presents

Extraordinary

Museum

Artifacts

and

Artwork

800 Years

of very rare and unusual

European Artwork...



Chargers

MOST ARTWORK CAN BE USED FOR CHARGERS

for updated artwork - please visit 'The Museum' - www.GreatForgeries.com

All of our chargers are created from a mould designed by us which was conceived from drawings of medieval plates. Each unique charger is hand-aged and a collectible work of art in its own right & as such proudly carries our E stamp and is also signed & dated. **There are 12 unique hand processes involved in the creation of this charger!**

The Curator - 'An Englishman in LA'

Provenience label as attached to all chargers
this refers to page 6 - Orpheus

ARCHIVAL ART CHARGER

ORPHEUS ARMORIAL

This original of this wonderful Italian plate is dated around 1550 and **worth an astonishing eighty thousand dollars!** Sadly we have no further information as to its origins except to say that this an extremely rare replica. This charger is for decorative purposes only & may be wiped with a damp cloth if necessary.

antiquities can be viewed at 'The Museum'

www.greatforgeries.com

please refer back to store for purchases

*recreated with care and patience
by*

*An Englishman in LA*TM
semper genaro

"the most unusual company this side of the 15th century"

218

THE ARCHIVAL CHARGER



Blue Bird

The Charger is a 16" decoupage ceramic plate with a hand-aged image that has been fragmented to give the appearance of aging cracks. The cracks are real and not part of the image, so if you run your fingers over the charger you will feel the fragments. The Charger itself is designed by us to replicate those of several centuries ago.

The back of the plate is dated on creation & carries the E seal of our company, there is also a hanging facility and all plates carry full information on the origins of the artwork. There is an enormous amount of hand work on this piece and as with all of our products no two chargers will ever be alike. Most of our images will work with the charger but please bear in mind this is a circular object so if the original image is oblong there will be some loss.



'Spanish Armorial'

16" Charger Plates

a totally unique product-stamped and dated



'Angel A18'



'Angel C35'



'Brahma'



'Campines'

Victorian Imagery

owned by us

16" Charger Plates

a totally unique product - stamped and dated



'Orpheus'



'Spanish Armorial'



'Female Dragon'

PLEASE NOTE THAT MOST OF OUR IMAGES ARE
AVAILABLE TO BE USED AS CHARGERS

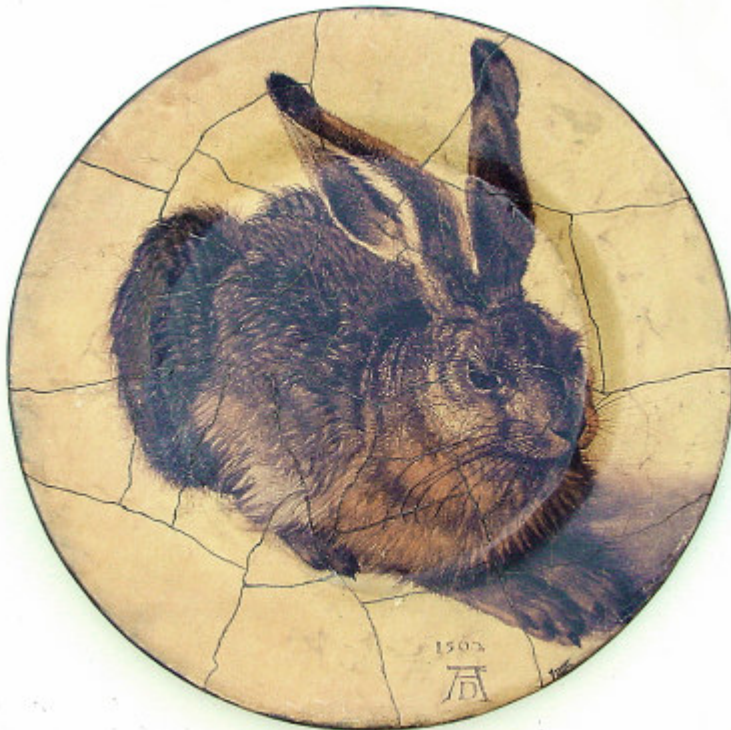
16" Charger Plates

a totally unique product - stamped and dated

'Cottage 6'



Dandelion



'Hare 3'



'Orchid 8'

CH Jesus
an astonishing gilded charger



close up showing gold leafed halo



CH The Annunciation c. 1550



CH Summer Landscape



CH Brown Spaniel



CH Black Spaniel

The Charger

2 new old additions...



Canal Scene Venice 0601-29



House on The Hill 0601-30

16" Charger Plates

rare art from the past - in the round



CH Cat 057-22



CH Elements 057-23

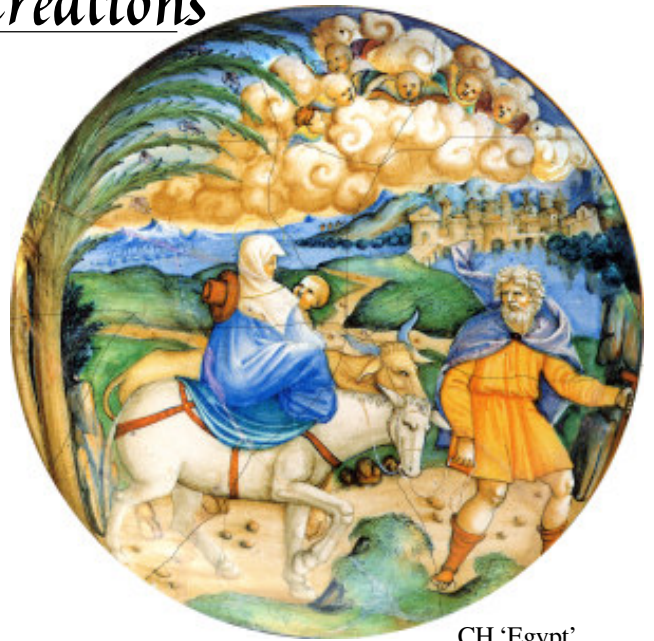


CH Sapho 057-21

Priceless Recreations



CH 'Bella'
04739



CH 'Egypt'
04740

16" 'cracked' chargers from a bygone era

Italy c.1600



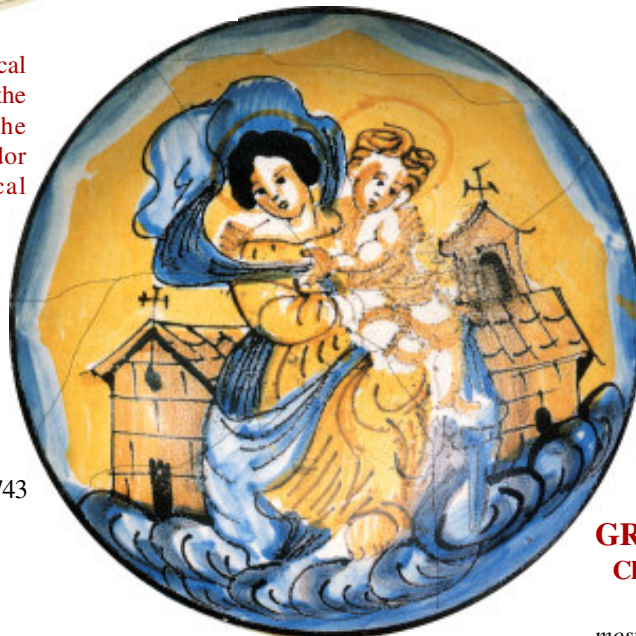
04741
CH 'Henry'



CH 'Hero' 04742

Created from an extraordinary historical image commemorating the union of the 'houses' of York and Lancaster, the English national symbol of the Tudor Rose is embodied in this musical cannon presented to Henry VIII.

VERY VERY RARE!



CH 'Loretta' 04743



12" Ceramic Tile 'Loretta'
04744

GREAT CONCEPT
Charger & Matching
Decorative Tile
most combinations possible



Plate Annunciation 07



Plate Cherubs

The Fairy Charger Collection

EXTREMELY RARE



Plate Fairy 1



Plate Fairy 2



Plate Fairy 3